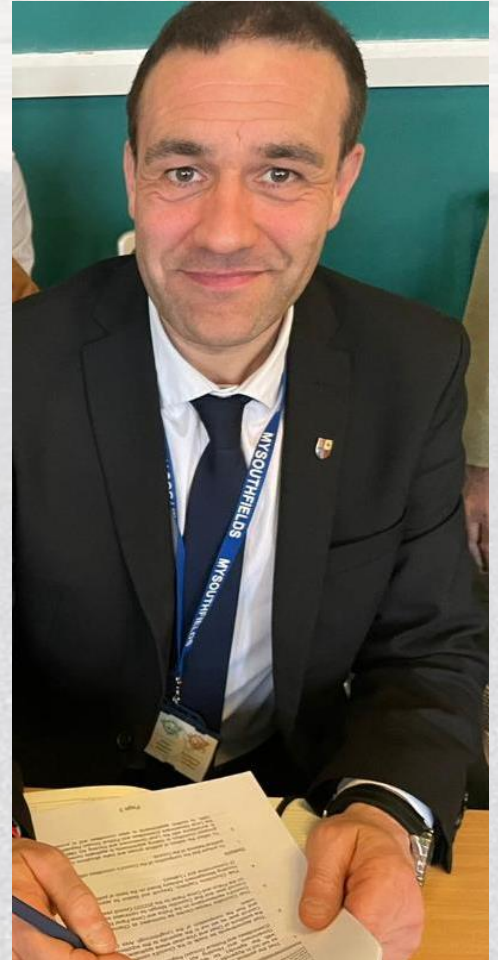


The Annual Report of Councillor Ted Parton

2021-2022

MyLoughboroughSouth

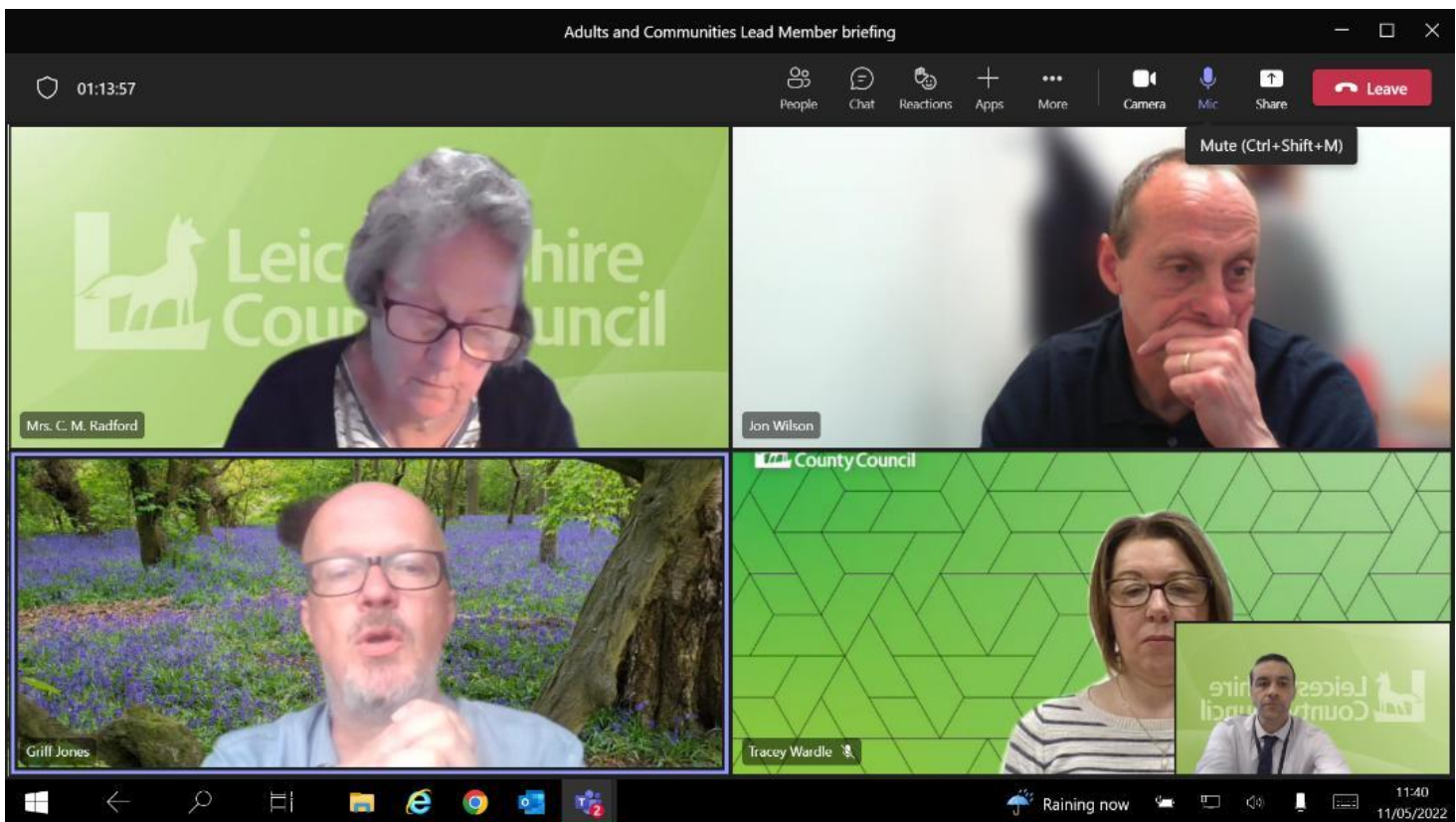


You_Matter...

All work that takes place, representing both the residents of the Loughborough South Electoral Division and the wider Leicestershire public, is driven by a need to deliver high quality local services for all.

Leicestershire County Council has a huge role to play in your life and representing the public at this organisation is a serious daily task.

You are welcome to take a look, from year one of the 2021-2025 electoral cycle, at issues, news and achievements in both the Loughborough South Division and wider afield in the county.



Adults and Communities - Cabinet Support Role

Shortly after the County Council elections on 4th May 2021, it was a huge honour to be asked to become the cabinet support member to Mrs Christine Radford, in the Adults and Communities Department.

Leicestershire County Council's (LCC's) Adults and Communities Department delivers library, heritage, adult learning and adult social care services to people living in Leicestershire. We aim to provide and commission high quality services which enrich the lives of individual people, families and their communities. The department has the largest budget in the council and covers a wide spectrum of care and community services.

Mrs Radford has decided to delegate part of her leadership portfolio as part of a job share. My role is therefore to politically lead the adult learning and mental health sides of the department.

The role involves a fortnightly lead member briefing with the directors and senior managers in the A&C Department. In addition, we visit as many facilities as possible across the county. The variety of venues is staggering: We have attended mental health rehabilitation homes, care homes, intensive respite centres, Gartree Maximum Security Prison, independent living flats, libraries, the Space Centre and many other events.


[Click HERE to view our 2021/22 course brochure!](#)

The 2021/22
GoLearn!
Brochure
AVAILABLE NOW!


Our full 2021/22 programme is now LIVE and ready for enrolments!
You can view courses and enrol online at www.leics.gov.uk/golearn or call us on FREEphone 0800 988 0308. Alternatively you can email us at adultlearning@leics.gov.uk and we can arrange a convenient time to get in touch.



Leicestershire County Council
Near Miss Campaign 2021
DON'T DISMISS A NEAR MISS
We've signed up to the pledge








A new care facility that enables those moving from residential care can transition to living by themselves with success.



Gartree maximum security prison -one of the more incredible experiences with the A&C Department...



Care facility that prepares those with profound mental health illness to successfully transition to independent living.



A respite residential home for the severely disabled in Hinckley.

Mental Health Champion

For the council year 2021-2022 the Chief Executive's Department appointed me to the role of mental health champion for Leicestershire. Visiting gardening projects and suicide prevention were highly insightful experiences.

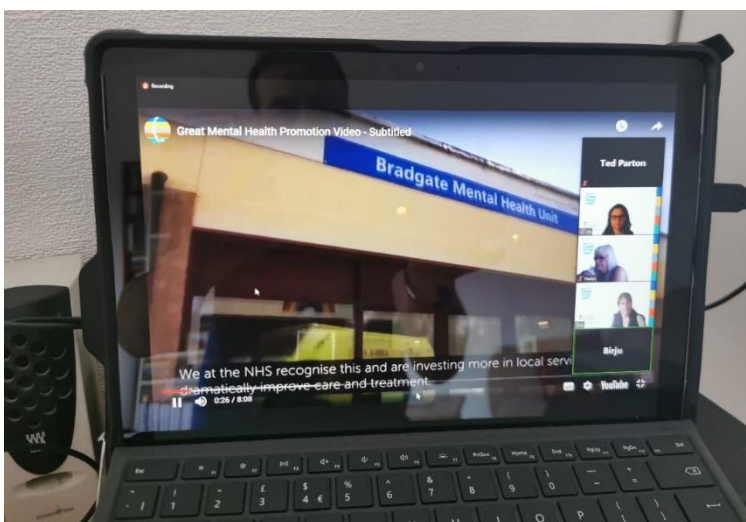


NHS Mental Health Reconfiguration

In 2021 the NHS, through their operating

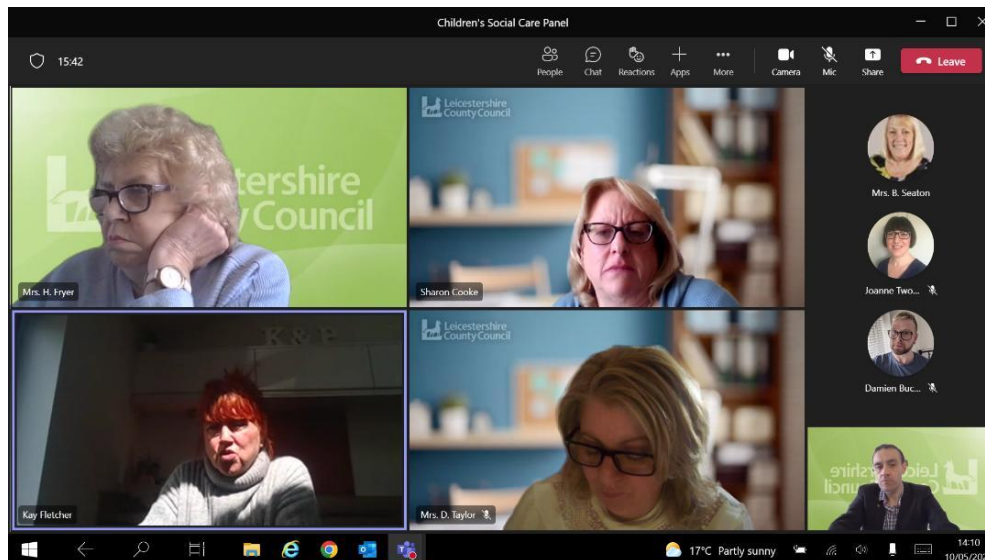
arm, the Leicestershire Partnership Trust, launched a major consultation on how to deliver mental health services through the county. The participation involved working with NHS managers, in order to ensure that as many people as possible had their views heard.

The resulting changes are now taking effect, meaning much more breadth to support, treatment and care, along with day /evening community-based services.



Children's Social Care Panel

The role of one of the three 'children leaving care champions' continues. Quarterly meetings are held to discuss child abuse /neglect case numbers, along with more regular meetings with staff to discuss the children that are now transitioning into adulthood.



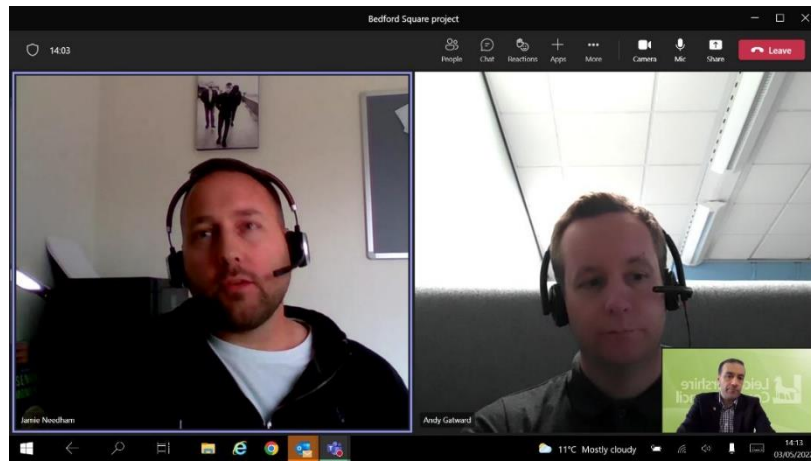
Loughborough Town Team /Bedford Square Gateway Development

In a previous annual report it was highlighted one's involvement in the task and finish design group for the Bedford Square Gateway Project.

When the scheme, under the clear direction of Charnwood Borough Council, who had signed a legal agreement taking ownership of the building work, began to run into significant issues, many meetings and discussions were held with a variety of staff from the contractors, Charnwood and Leicestershire.

A serious matter that emerged in the spring of 2022 was that, due to there being no colour delineation of flag stones, kerbstones and parking bays, many people were falling and seriously injuring themselves. I urgently held high-level meetings with all parties and have been persistently making the case, including in the media, that the design must be varied, with the insertion of differently coloured kerbstones. We had ensured that a temporary solution was enacted, with a white line being placed inside the parking bays.





Member's Highways Fund

The most common resident enquiries pertain to highway matters. Due to reduced Government funding, Leicestershire has been unable to provide all the solutions it would like to.

A recent funding allocation from central Government has allowed some extra expenditure on highways and the council has allocated each county councillor £25000 in the financial years 2012-22 and 22-23. The items I requested to be conducted with the money are:

Request	Location	Status *	Estimated Cost
Request to clear the shrubs and replaced them with seats and perhaps an outdoor game like table tennis or pétanque	HERRICK ROAD Loughborough LOUGHBOROUGH	MHCF Declined	
Remove H-Bar outside No.100 and 116 Herrick Road.	HERRICK ROAD Loughborough LOUGHBOROUGH	MHCF Processing	
One bench for Farnham Road playing area -with plaque for recently deceased borough councillor.	FARNHAM ROAD Loughborough LOUGHBOROUGH	MHCF Processing	
Request for cycle lane markings on the northbound direction of Forest Road, Loughborough South Division	FOREST ROAD Loughborough LOUGHBOROUGH	MHCF Processing	
Road sign for Loughborough Lawn Tennis Club - the club asked for a sign to be put in place indicating where the club is located, this request was turned down previously (club with part fund).	INGLE PINGLE Loughborough LOUGHBOROUGH	MHCF Processing	
Replacement 'No Dog Fouling' sign at junction of Manor Rd and Poplar Rd	MANOR ROAD Loughborough LOUGHBOROUGH	MHCF Processing	
MVAS x2 (Locations tbc)	UNKNOWN - LEICESTERSHIRE - CHARNWOOD	MHCF Processing	
One tree planted, Park Road	PARK ROAD Loughborough LOUGHBOROUGH	MHCF Processing	
A speed bump / central pedestrian refuge /zebra crossing at the entrance /exit to the Grange retail park, Allendale Road	ALLENDALE ROAD Loughborough LOUGHBOROUGH	MHCF Processing	
A large T-Junction sign for the entrance to Edelin Road	EDELIN ROAD Loughborough LOUGHBOROUGH	MHCF Processing	
Grass mesh, to protect the surface from parked vehicles -corner of Shelthorpe Road and Castledine Street Extension.	SHELTHORPE ROAD Loughborough LOUGHBOROUGH	MHCF Processing	



Councillor Ted Parton

ted.parton@leics.gov.uk
01509 215842 / 07845 574166

Twitter [@MyLboroSouth](https://twitter.com/MyLboroSouth)
Facebook [CllrTedParton](https://www.facebook.com/CllrTedParton)
website www.tedparton.co.uk

[Thursday 19th August 2021](#)

Proposals for a Town Centre and vicinity safer



zone

Your Thoughts Please

Dear Resident,

The issue of speeding traffic continues to dominate many people's minds, in relation to their local environment. A great many people worry about the damage carbon emissions is having on our future. Thirdly, many residents make contact to ask how we can make our roads safer and more amenable to pedestrians and cyclists.

In response to the above, I have been in contact with the Leicestershire Highways for several months, asking what can be done to reduce the speed limit from 30 to 20 mph on roads in Southfields ward.

The process is both expensive and requires much evidence of need to be collated. Fortunately, persistence has paid off, as the County Council have this week offered the possibility of the following concession:

'There is a project to improve cycling and walking in Loughborough and as part of this the centre of Loughborough may be considered as a 20mph zone and we could look to incorporate Frederick Street and roads adjoining Beacon Road and Park Road. This would be a much better measure than considering a speed limit on specific streets where it is likely that it will raise further requests for 20mph speed limit reductions elsewhere. Also for localised 20mph speed limits in urban areas it is hard to know where to stop and start them.'

It is extremely important that you have a voice at a local level, and to that end, I am asking if you would be so kind as to assist in providing your thoughts on the matter of localised 20 mph zones.

Please would you:

- 1, State whether you would support the process to see the speed limit on this street reduced to 20mph
- 2, How much of an issue is traffic speed on this road?
- 3, How much of an issue is traffic volume on this road?
- 4, How likely are you to both walk and cycle more on this and neighbouring streets, should the speed limit be reduced to 20mph?

If you would either:

- I. E-mail both myself ted.parton@leics.gov.uk and Leicestershire Highways at:

highwayscustomerservices@leics.gov.uk

Please would you quote: 809247 Park Road, Beacon Road, Loughborough & 832562 Frederick Street, Loughborough: 20mph Speed Limit Requests

- II. Write to: Leicestershire Highways, County Hall, Glenfield, Leicester, LE3 8RA

Thank you,

Yours Faithfully,

Ted Parton

Cllr Ted Parton

P.S. Because of the Bedford Square Gateway Project, the pandemic and climate change, there is a real focus on improving safety, reducing carbon emissions and encouraging healthy, sustainable travel. With 20 mph zones, we can make our streets less polluted, quieter and safer.





A priority for many residents is the amount of growth in kerbsides. The council perform two sprays of weedkiller per year and I am seeking to use some of the member's highways fund to add extra weedkilling in certain areas of the Shelthorpe estate, along with the Burleigh Road area.



Road safety is always a critical priority and with two fatalities in the division over the year, efforts to improve conditions on the highway are always being considered.

Thank you very much for reading this report. For more information, please contact (seven days a week) – ted.parton@leics.gov.uk

01509 215842 / 07845 574166

Twitter [@MyLboroSouth](https://twitter.com/MyLboroSouth)
Facebook [CllrTedParton](https://www.facebook.com/CllrTedParton)
website www.tedparton.co.uk

